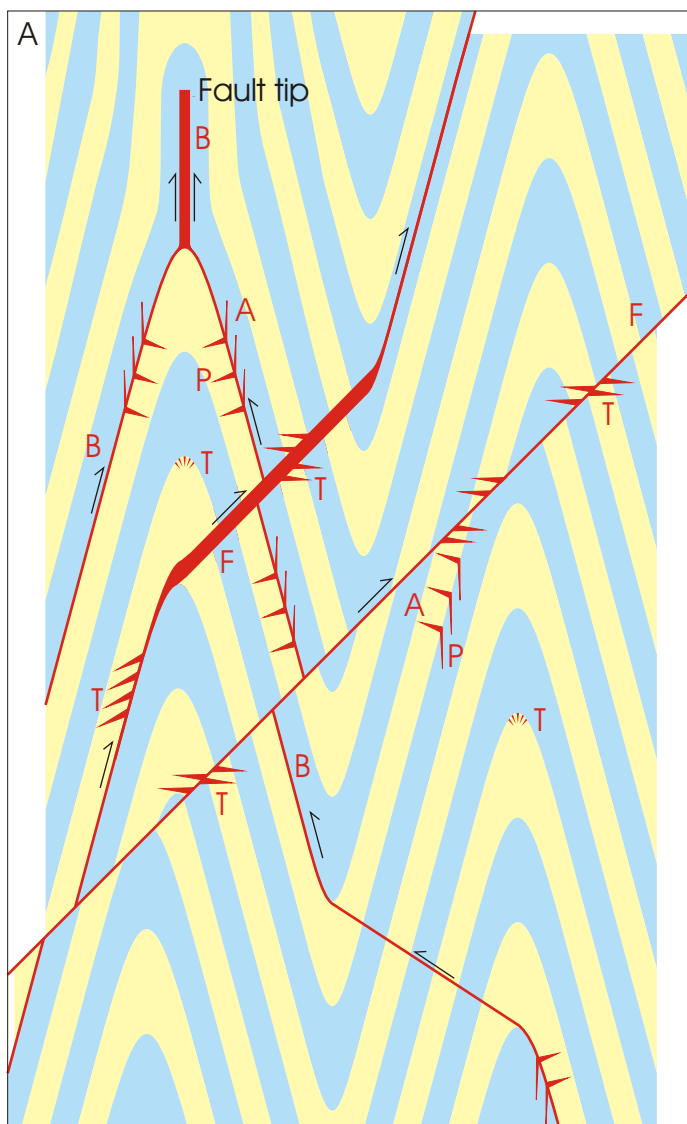
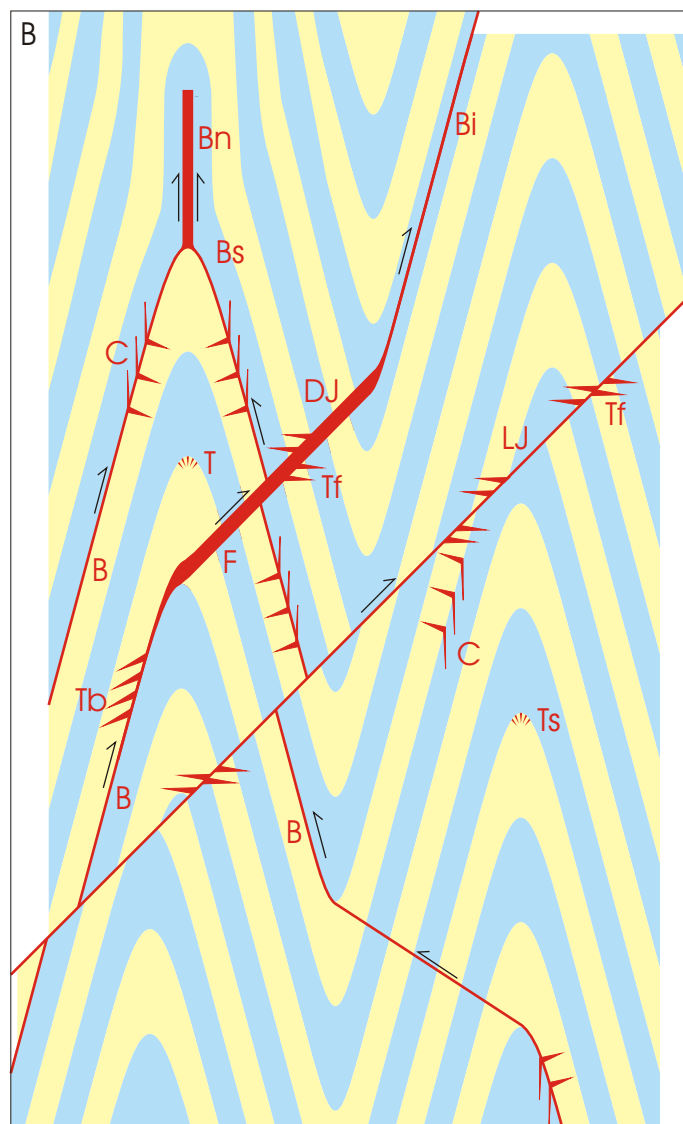


## 4.2. Vein/reef configurations



Fault (F)  
 Tensional (T)  
 Bedded (B)  
 Axial planar (A)  
 Perpendicular (P)



Bedded - Bedded (B)  
 - Saddle (Bs)  
 - Neck (Bn)  
 - Indicator (Bi)  
 Cleavage (C)  
 Fault - Leatherjacket (LJ)  
 - Dilatant Jog (DG)  
 Tension - Fault related (Tf)  
 - Bedding related (Tb)  
 - Hinge related (Th)